

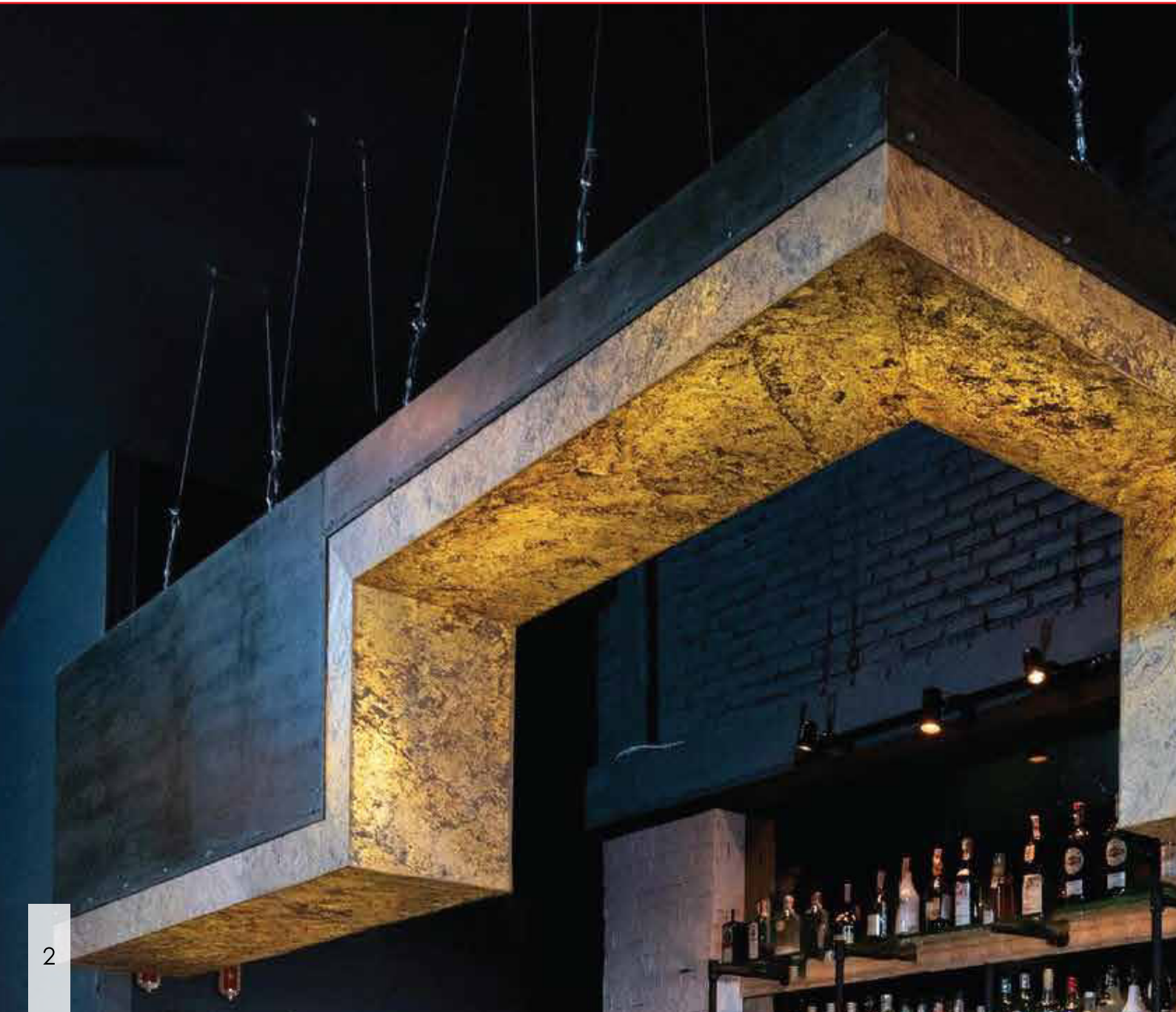
Adal Stone[®]

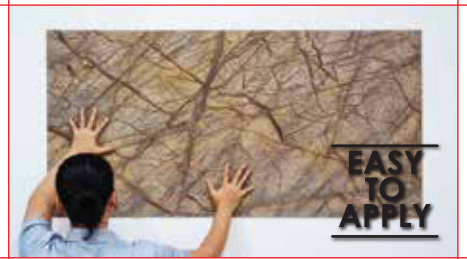
Shape natural stones for classy spaces





Shape natural stones for classy spaces





Adal Stone® product line is one of the most exciting innovative building materials in recent years. These light, flexible and ultra-thin sheets of natural stone are the first stones that a woodworker can process with normal tools.

The natural stone veneers' thickness varies from 0.1 to approx. 2.0mm made from large stone slabs. Polyester resin and glass fibre on the backside are holding the grains together. The rough split natural looking surface and the changing colours make each sheet a unique masterpiece and an aesthetically attractive display.

Differences in colour and structure of the rough-split surface are by no means accidental. It is natural stone veneer being formed through millions of years thus uniquely charming. No artificial imitations can ever achieve this.



Ultrathin



Easy to install



Lightweight



NATURAL STONE



FLEXIBLE



Many colors



UV Resistant



**UNLIMITED
POSSIBILITIES**



Waterproof



Eco friendly



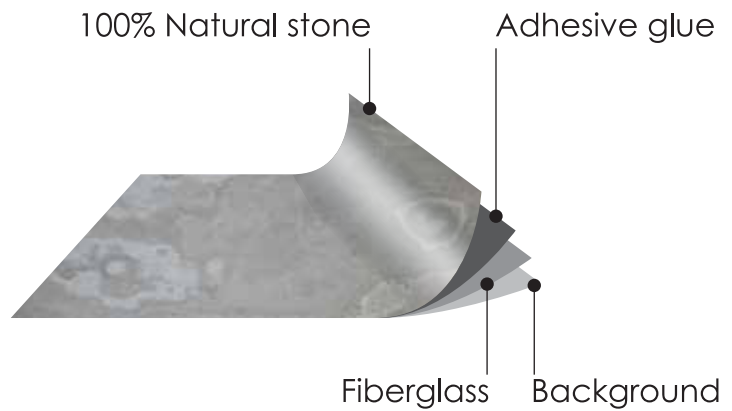
GERMAN QUALITY

Slim Cover

S series

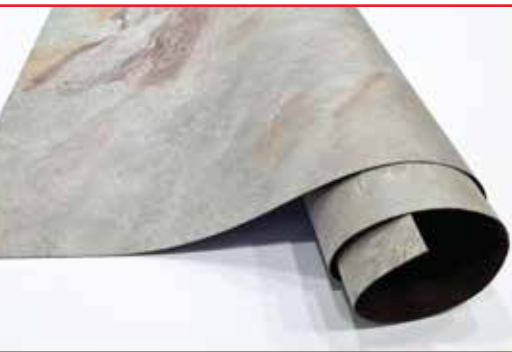


- 100% Natural Stone Surface
- Thickness: ~2.5mm
- Weight: approx. 3kg/m²
- Std. size: 1220 x 610mm
- Opt. size: 2440 x 1220mm
- Cutting: Use hard-metal tipped circular saw
- Drilling and routing: Use tools for wood or stone
- Flexibility can be increased by applying heat
- Carrier materials: concrete, wood, metal, etc.
- Easy Transportation
- Eco Friendly

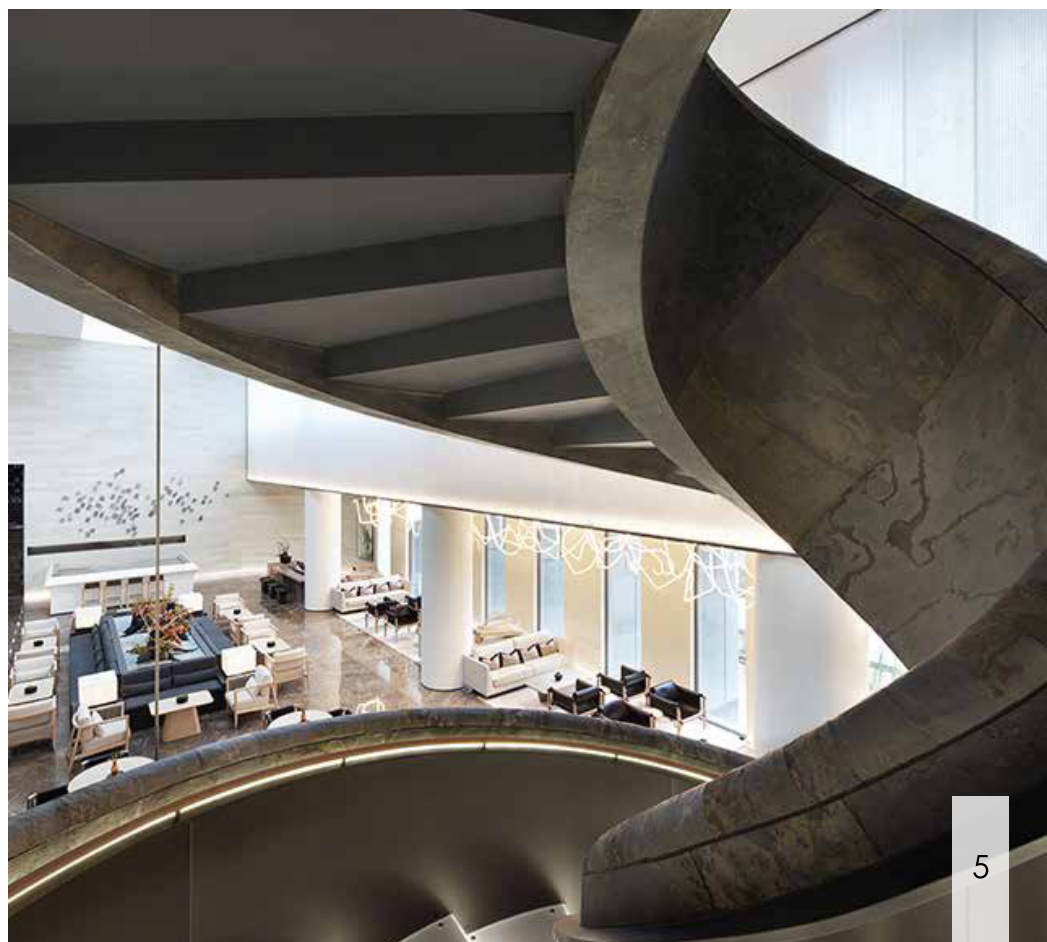
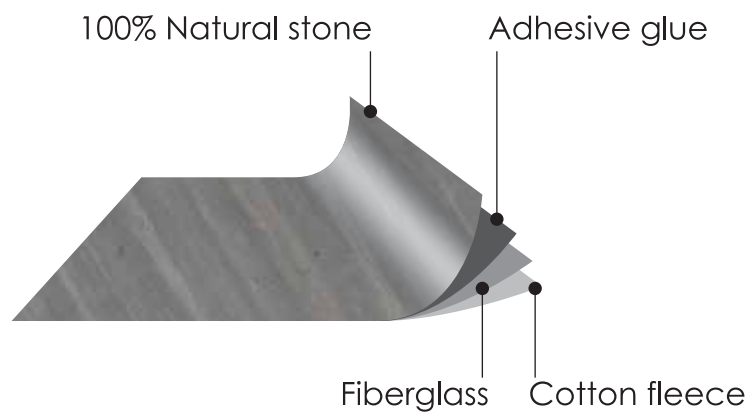


Flexi Face

F series

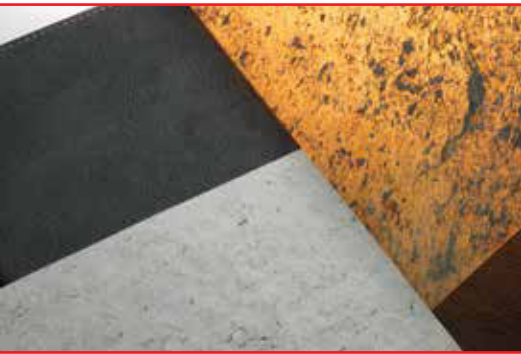


- 100 % Natural Stone Surface
- Thickness: 50µm to 1.0mm
- Weight: approx. 0.8kg/m²
- Std. size: 1220 x 610mm
- Opt. size: 2440 x 1220mm
- Cutting: carpet knife or scissor from the rear side
- Carrier materials: concrete, wood, metal, etc.
- Extremely flexible
- Easy Transportaion
- Eco Friendly



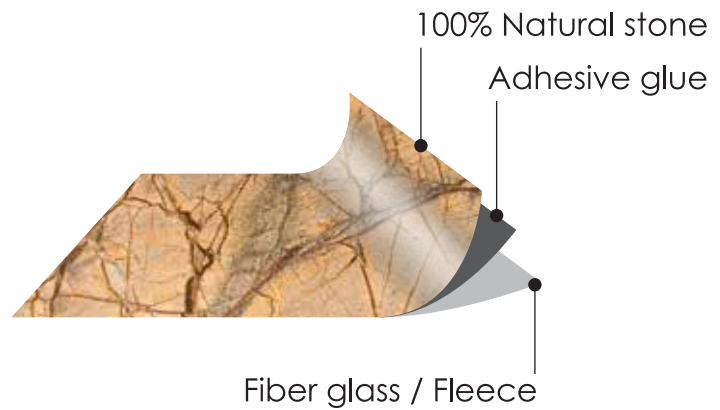
Light Wall

L series



 Adal Stone®

- 100% Natural Stone Surface
- Thickness: ~2.5mm
- Weight: approx. 3kg/m²
- Std. size: 1220 x 610mm
- Opt. size: 2440 x 1220mm
- Cutting: Use hard-metal tipped circular saw
- Drilling and routing: Use tools for wood or stone
- Flexibility can be increased by applying heat
- Carrier materials: Glass, acrylic glass, etc.
- Allow light to pass through
- Easy Transportation
- Eco Friendly





Colors

& illustrations



Autumn Rustic

S F L



Autumn White

S F L



Autumn

S F L



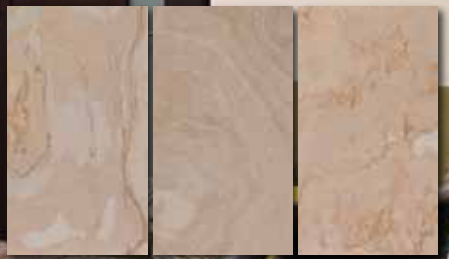
Mongolian



S F L



Tan



S F L



Auburn



S F L



Black Line



S F L



Burning Forest



S F L



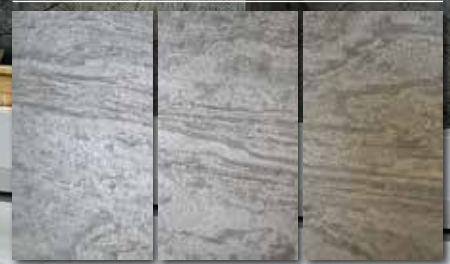
Golden



S F L



Jerra Green



S F L



Silver Gray



S F L



S F

Black Slate



S F L

Black Star



S F L

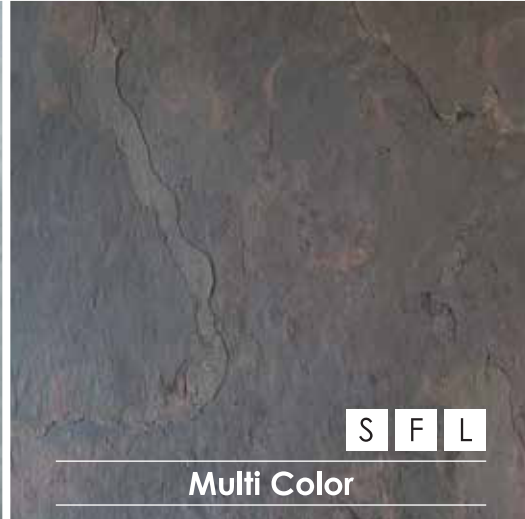
Copper

 Adal Stone®



S F L

Forest



S F L

Multi Color



S F

Multi Pink



S F L

Silver Shine



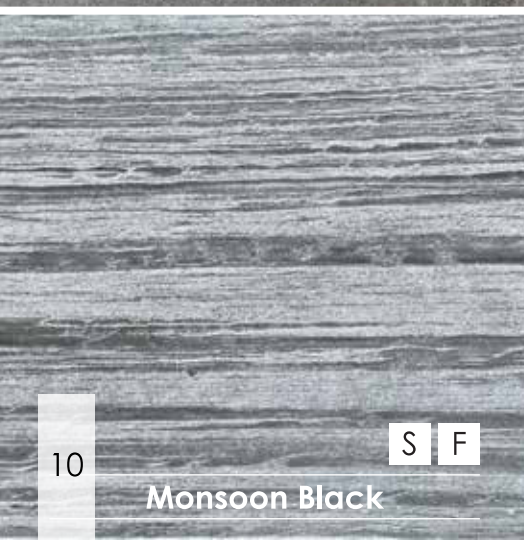
S F L

Silver Shine Gold



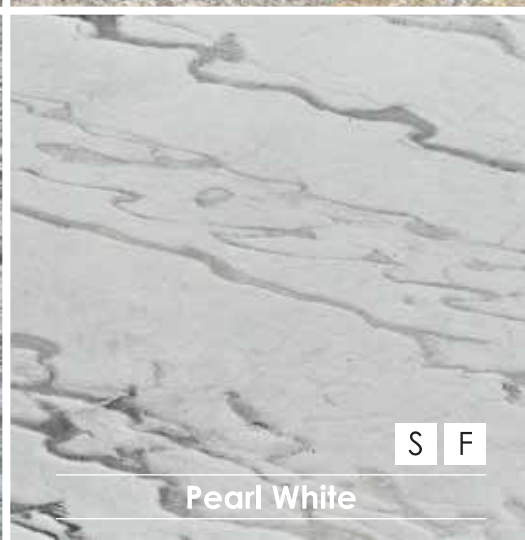
S F L

Terra Red



S F

Monsoon Black



S F

Pearl White



S F

Rainforest Brown

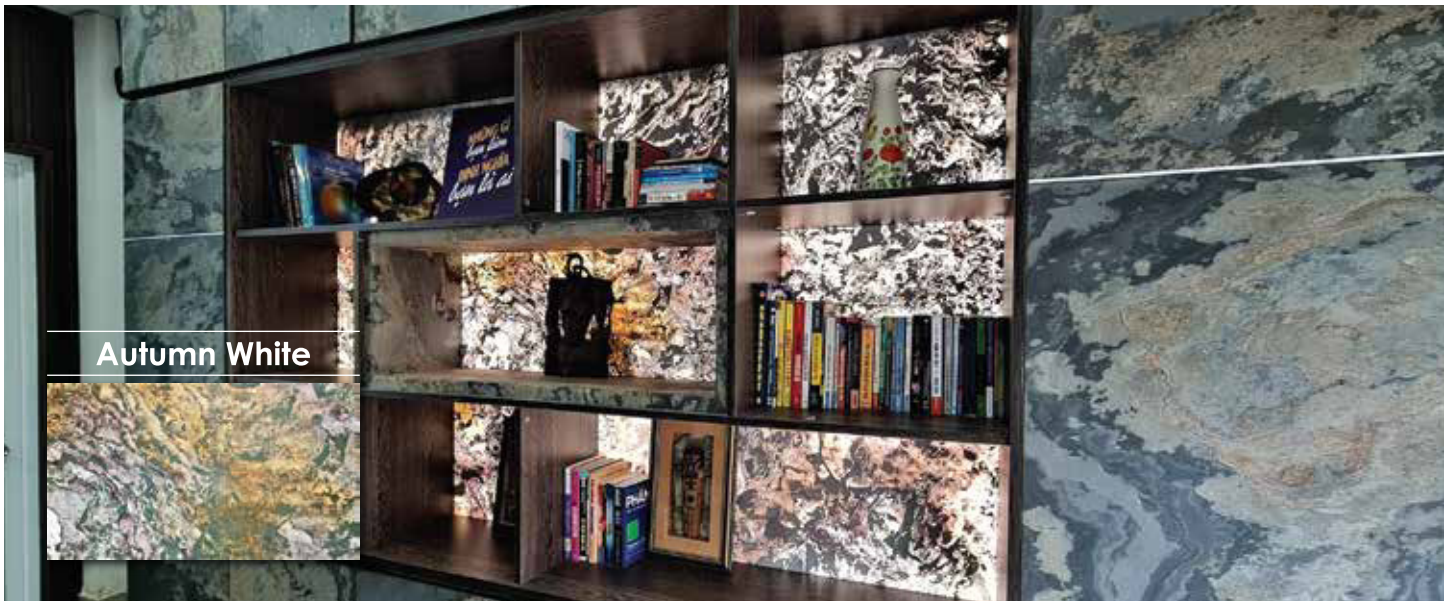


Autumn Rustic



Lighting

showcase



Autumn White



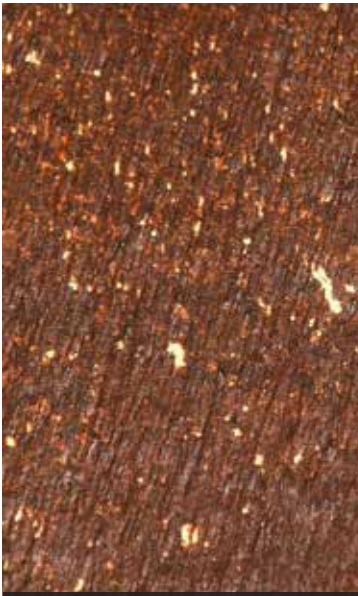
Black Line



Lighting

showcase





Auburn



Black Star



Burning Forest



Copper



Light wall color range



Forest



Golden



Jerra Green



Silver Gray



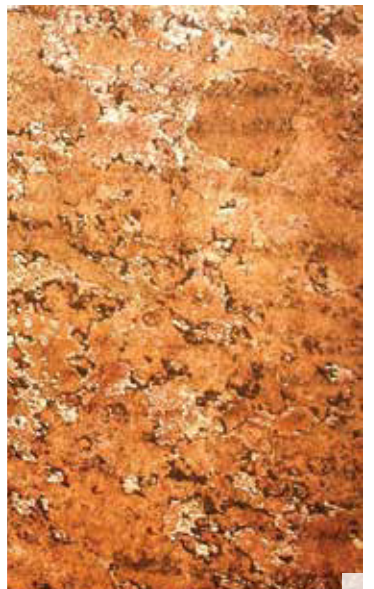
Silver Shine



Silver Shine Gold



Tan



Terra Red

Note: Final colours of the lighting stone effects depend on both stone types and light sources.



Applications

| Art Series | S | F | L | Type |
|----------------------|---|---|---|--------|
| Auburn | x | x | x | Lux |
| Autumn | x | x | x | Lux |
| Autumn Rustic | x | x | x | Lux |
| Autumn White | x | x | x | Lux |
| Black Line | x | x | x | Shine |
| Black Slate | x | x | o | Lux |
| Black Star | x | x | x | Shine |
| Burning Forest | x | x | x | Shine |
| Copper | x | x | x | Shine |
| Forest | x | x | x | Lux |
| Golden | x | x | x | Shine |
| Jerra Green | x | x | x | Shine |
| Mongolian | x | x | x | Lux |
| Monsoon Black (*) | x | o | o | Marble |
| Multi Color | x | x | x | Lux |
| Multi Pink | x | x | o | Lux |
| Pearl White (*) | x | o | o | Marble |
| Rainforest Brown (*) | x | o | o | Marble |
| Silver Gray | x | x | x | Shine |
| Silver Shine | x | x | x | Shine |
| Silver Shine Gold | x | x | x | Shine |
| Tan | x | x | x | Lux |
| Terra Red | x | x | x | Lux |

(*) - Only available with std. size (1220 x 610mm)

o - Not available

x - Available

| | Wall | Outdoor | Furniture | Bathroom | Floor | Kitchen |
|----------|------|---------|-----------|----------|-------|---------|
| S | x | x | x | x | x | x |
| F | x | o | x | o | o | o |
| L | x | x | x | x | x | x |

| | Facade | Flex | Light | |
|----------|--------|------|-------|---------------------------------|
| S | x | (*) | o | (*) - Heating for more flexible |
| F | o | x | o | o - Not available |
| L | o | (*) | x | x - Available |

Tools & Accessories



Glue / Adhesive



Sealers



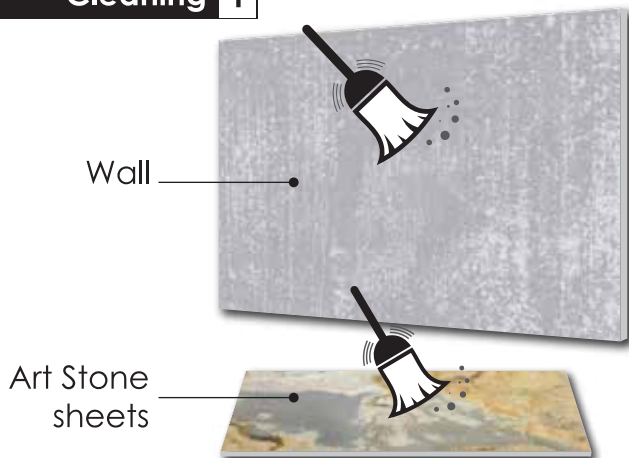
Tools



Safety

Installation

Cleaning 1



Apply sealers (*) 2



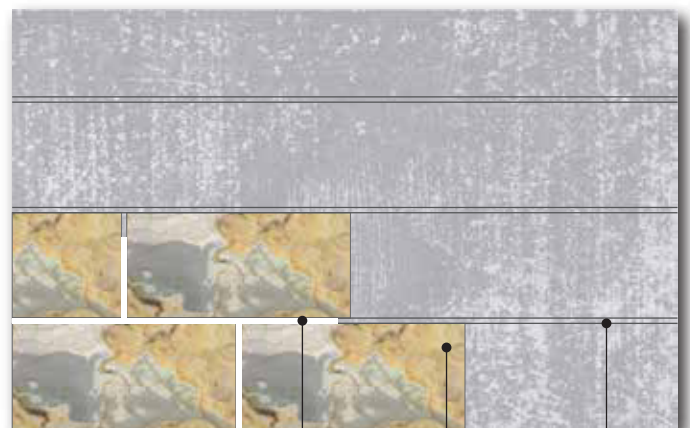
Cutting 3



Apply adhesives 4



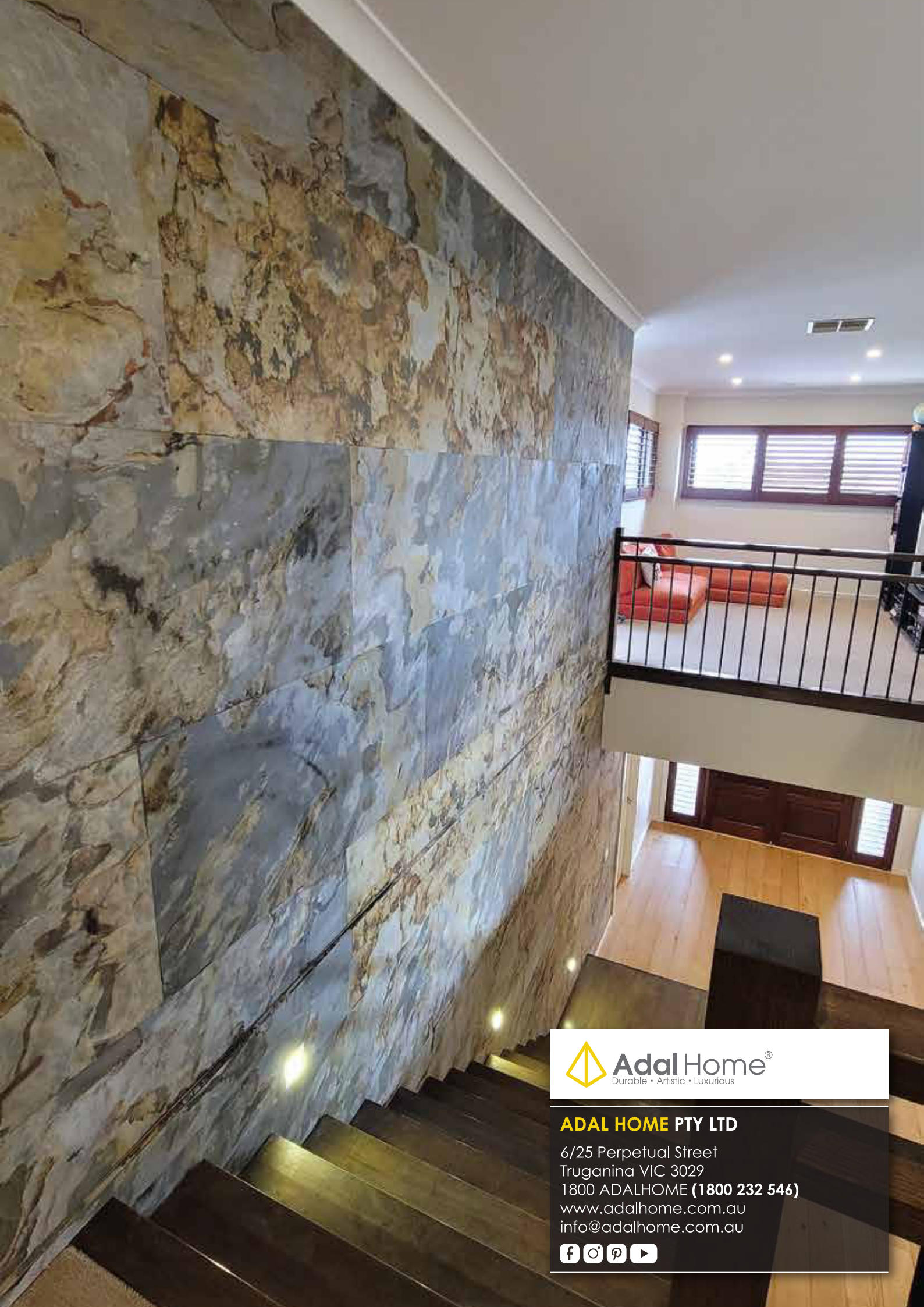
Install 5



Grout the gaps

Glue stone sheets on wall

Chalking guide line



ADAL HOME PTY LTD

6/25 Perpetual Street
Truganina VIC 3029
1800 ADALHOME (1800 232 546)
www.adalhome.com.au
info@adalhome.com.au

